



SPACE
TIME
RESEARCH

SuperTABLE

INSTALLATION GUIDE

Release 7.0

Copyright

Published by:

Space-Time Research Pty Ltd
630 Church Street
Richmond, 3121
Melbourne, Victoria
AUSTRALIA
www.spacetime-research.com

Calling from Australia	1800 138 385
Calling from New Zealand	0800 448 774
Calling from other countries	+61 3 9425 8488

Release number: 7.0

Copyright © 1986 - 2010 Space-Time Research Pty Ltd. All rights reserved.

These products, documents, and materials are protected by copyright law and distributed under licenses restricting use, copying, distribution, and decompilation. No part of these products, documents, and materials may be reproduced in any form by any means without prior written authorization of Space-Time Research Pty Ltd ("STR") and its licensors, if any.

All other trademarks are properties of their respective owners.

THE PRODUCTS, DOCUMENTS, AND ANY MATERIALS PROVIDED BY STR ARE PROVIDED ON AN "AS IS" BASIS WITHOUT ANY REPRESENTATIONS, WARRANTIES OR CONDITIONS OF ANY KIND, WHETHER EXPRESS, IMPLIED, STATUTORY, OUT OF A COURSE OF DEALING OR USAGE, TRADE OR OTHERWISE INCLUDING ANY IMPLIED WARRANTIES OR CONDITIONS OF MERCHANTABILITY, MERCHANTABILITY QUALITY, FITNESS FOR ANY PARTICULAR PURPOSE OR USE, TITLE, OR NON-INFRINGEMENT. STR DOES NOT REPRESENT OR WARRANT THAT THE PRODUCTS, DOCUMENTS, OR ANY MATERIALS WILL BE FREE OF DEFECTS, UNINTERRUPTED, ACCURATE, COMPLETE, CURRENT, STABLE, BUG-FREE, ERROR-FREE, OR AVAILABLE AT ANY TIME.

TO THE MAXIMUM EXTENT PERMITTED BY LAW, IN NO EVENT SHALL STR BE LIABLE FOR ANY DIRECT, INDIRECT, CONSEQUENTIAL, INCIDENTAL, SPECIAL, RELIANCE, PUNITIVE OR OTHER DAMAGES OR EXPENSES OF ANY KIND, INCLUDING BUT NOT LIMITED TO ANY LOSS OF PROFITS OR REVENUE, LOST SAVINGS, INTERRUPTED BUSINESS, LOST BUSINESS, LOST BUSINESS OPPORTUNITIES, LOST DATA, LOST GOODWILL, LOSS FROM WORK STOPPAGE, COSTS OF OVERHEAD, COSTS OF COVER, LOSS OF ANTICIPATED BENEFITS HEREUNDER, ARISING OUT OF OR RELATED TO THE PRODUCTS, DOCUMENTS, OR ANY MATERIALS PROVIDED, HOWEVER CAUSED AND ON ANY THEORY OF LIABILITY, EVEN IF STR HAS BEEN ADVISED OF THE POSSIBILITY OF SUCH DAMAGES, AND NOTWITHSTANDING THE FAILURE OF THE ESSENTIAL PURPOSE OF ANY LIMITED REMEDY STATED HEREIN.

Contents

Copyright	1
Contents.....	2
Introduction	3
Requirements	3
Platforms	3
Hardware Requirements - Windows.....	3
Software - Windows.....	3
Third Party Software - Windows	3
Permissions	3
Support Resources.....	4
Windows Installation	5
Pre-requisite	5
Install SuperTABLE Installation.....	5
Install Adobe Acrobat	15
Install ESRI ArcExplorer.....	19
Upgrade SuperTABLE Installation	24
Quit SuperTABLE Installation.....	26

Introduction

This installation covers the following environments:

- Microsoft Windows

Requirements

This section describes the Space-Time Research recommended system requirements for operating SuperTABLE, however you may use additional hardware. Generally greater hard disk capacity and random access memory (RAM) gives better performance.

Platforms

The following 64-bit Windows operating systems are supported:

- Microsoft Windows 7
- Microsoft Windows 2008 Server R2
- Microsoft Windows 2003 Server SP 1
- Microsoft Windows XP Professional SP 2

The following 32-bit Windows operating systems are supported:

- Microsoft Windows 7
- Microsoft Windows Vista
- Microsoft Windows 2003 Server SP 1
- Microsoft Windows XP Professional SP 2

Hardware Requirements - Windows

- Pentium IV 1GHz processor
- 512MB RAM
- 250MB hard disk space for SuperTABLE software

Software - Windows

- Microsoft .NET Framework 3.0

Third Party Software - Windows

- ESRI ArcExplorer software - only required for mapping
- Acrobat Reader 4.0

Permissions

SuperTABLE enables user permissions for reading initialization files, so you can run SuperTABLE without full local administration access. However the default installation does not allow initialization files to be updated. This means saving User Preferences and using certain functionality requires updating the initialization files. Administrators must decide which initialization files can be updated by users.

For Microsoft Windows XP you must have local administration permissions to install SuperTABLE.

For Microsoft Windows 2000 and later, SuperTABLE must be installed by an Administrator . Then the Administrator must grant a number of privileges to allow SuperTABLE to be available to users. This is based on the average user having the privilege of User.

The following variables are used to set permissions so the users can access SuperTABLE:

- WINDIR variable - must be set to the directory in which Windows is installed (generally C:\\Windows)
- WINSYSDIR variable - must be set to the Windows system directory (generally C:\\Windows\\system32)
- TARGETDIR variable - must be set to the directory in which SuperTABLE has been installed (generally C:\\Program Files\\STR\\SuperTABLE).

The following commands must be run by an Administrator as they have appropriate access to the relevant files and directories.

```
@echo off
set FLAG=/t /e /g Everyone:R
set WINDIR=%1
set WINSYSDIR=%2
set TARGETDIR=%3
cacls %TARGETDIR% %FLAG%
cacls %WINDIR%super.ini %FLAG%
cacls %WINDIR%cross.ini %FLAG%
cacls %WINDIR%style.ini %FLAG%
cacls %WINDIR%chart.ini %FLAG%
cacls %WINDIR%mapmod.ini %FLAG%
cacls %WINDIR%PageLayout.ini %FLAG%
cacls %WINDIR%summary.ini %FLAG%
cacls %WINSYSDIR%MSVCP50.DLL %FLAG%
cacls %WINSYSDIR%msvcirt.dll %FLAG%
cacls %WINSYSDIR%mfc42.dll %FLAG%
cacls %WINSYSDIR%MSVCP60.DLL %FLAG%
cacls %WINSYSDIR%msvcrt.dll %FLAG%
cacls %WINSYSDIR%IM31tif.dil %FLAG%
cacls %WINSYSDIR%IM31jpg.dil %FLAG%
cacls %WINSYSDIR%IM31bmp.dil %FLAG%
cacls %WINSYSDIR%IM31XBMP.DEL %FLAG%
cacls %WINSYSDIR%IMGMAN31.DLL %FLAG%
cacls %WINSYSDIR%CTL3D32.DLL %FLAG%
```

Support Resources

Space-Time Research provides a number of support resources. For details, check the Space-Time Research website at <http://www.spacetime-research.com/support.html>.

Windows Installation

Pre-requisite

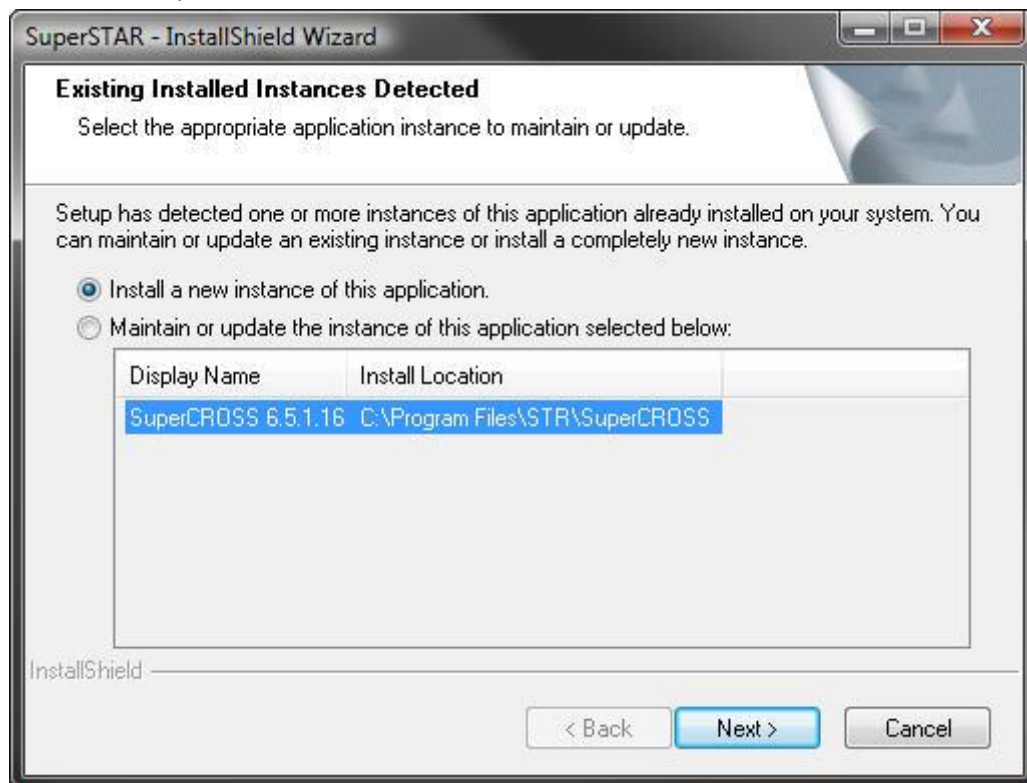
Download SuperTABLE from Space-Time Research's website www.spacetime-research.com

Note: These instructions are for Windows Vista. Where the Windows Server or Windows XP installation is different, this has been noted.

Install SuperTABLE Installation

1. From the Windows start menu, select **Computer**.
Note: For Windows Server and Windows XP, from the Windows start menu, select **start > Run...** The Run dialog displays.
2. Browse to the setup.exe file.
Note: For Windows Server and Windows XP, click the **Browse...** button to locate the Setup.exe file.
3. Click the **OK** button.

If the Existing Installed Instances Detected dialog displays, then you have an existing copy of SuperTABLE or SuperCROSS installed.

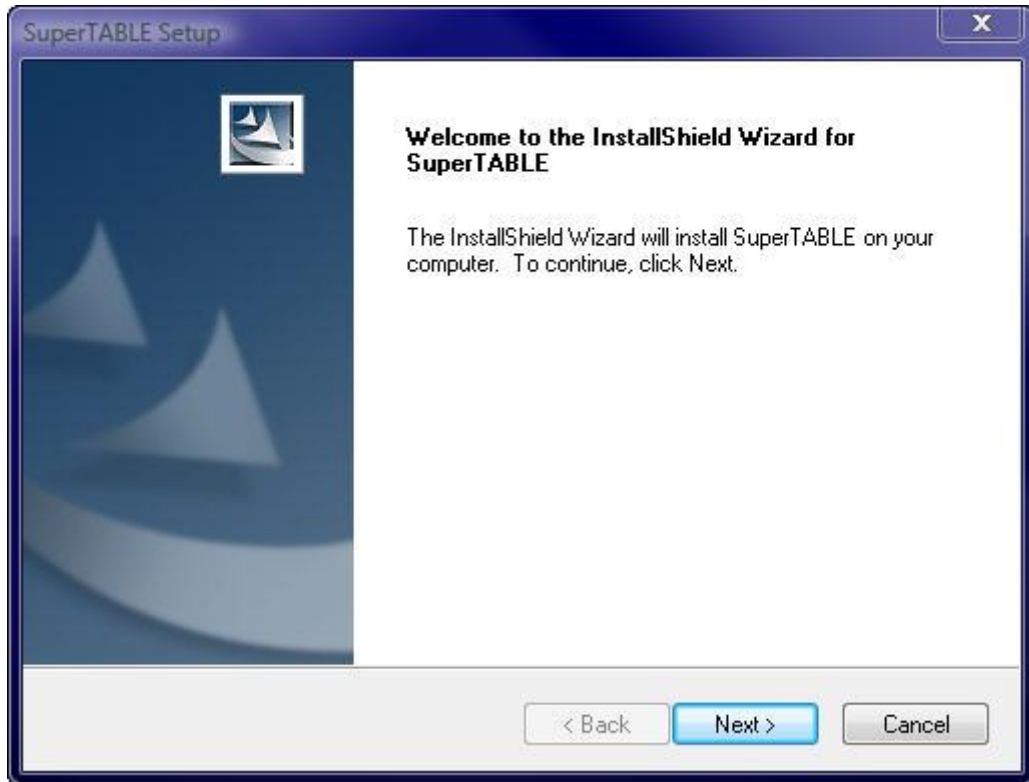


Complete one of the following:

1. Select the **Maintain or update the instance of this application selected below** option button.
 2. Click the **Next >** button.
 3. Refer to [Upgrade SuperTABLE Installation](#) for more information.
- OR

1. Keep the default selection **Install a new instance of this application** option button.
2. Click the **Next >** button. The Welcome to the InstallShield Wizard for SuperTABLE displays.

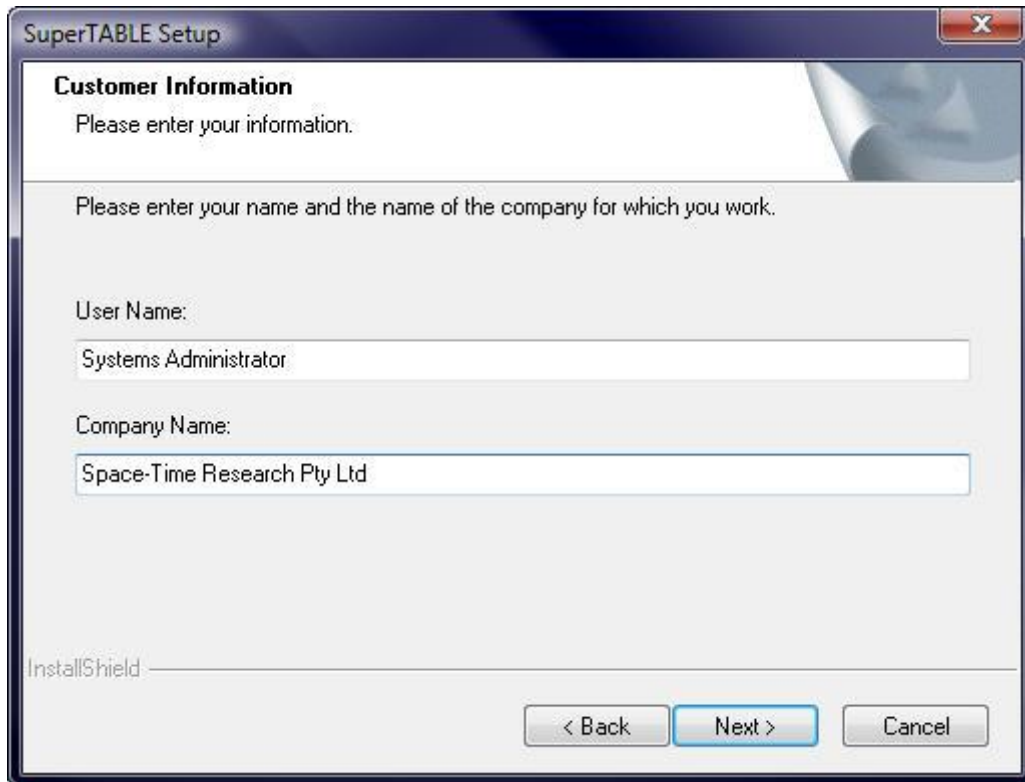
If you are installing on a clean machine then the Welcome to the InstallShield Wizard for SuperTABLE dialog displays.



4. Click the **Next >** button.
The License Agreement dialog displays.

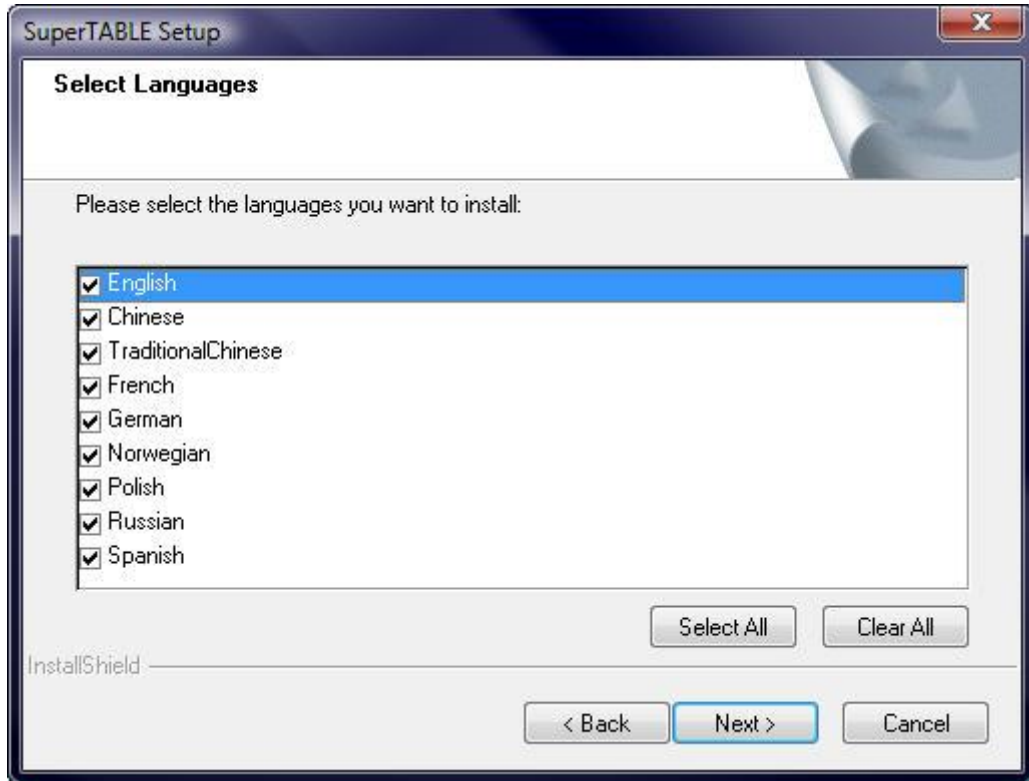


5. Click the **Yes** button to accept the agreement. Note: If you do not agree contact your supplier or Space-Time Research.
The Customer Information dialog displays.

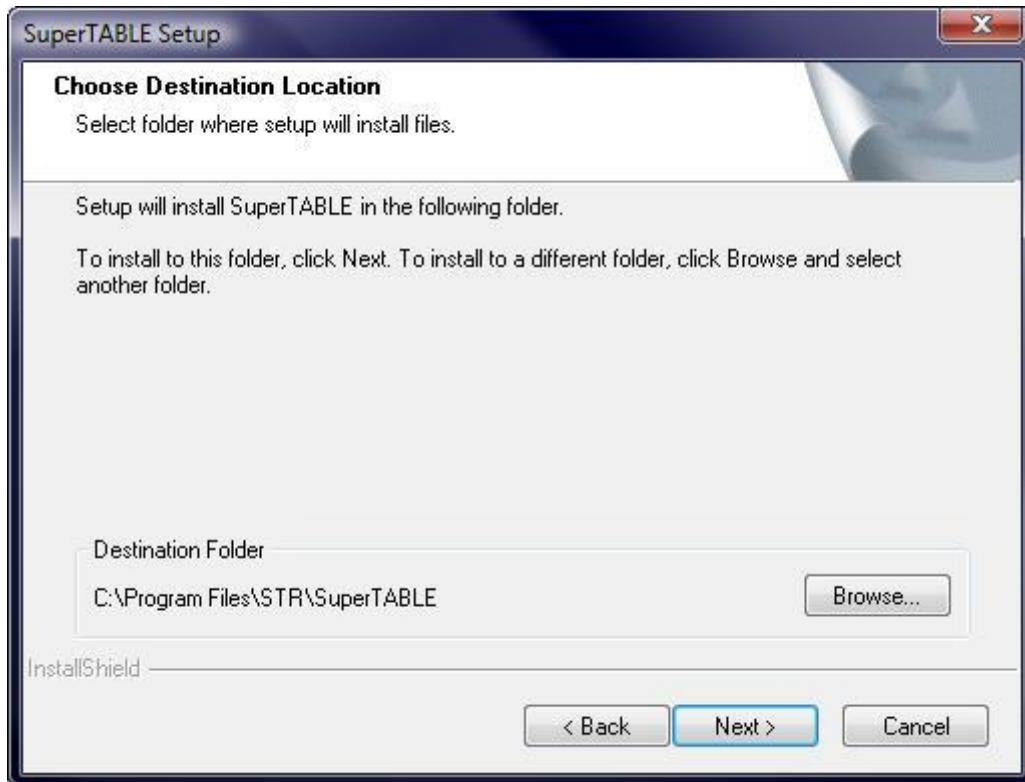


6. If required, in the **User Name** field, enter your **name**.

7. If required, in the **Company Name** field, enter the **company name**.
8. Click the **Next >** button.
The Select Languages dialog displays.



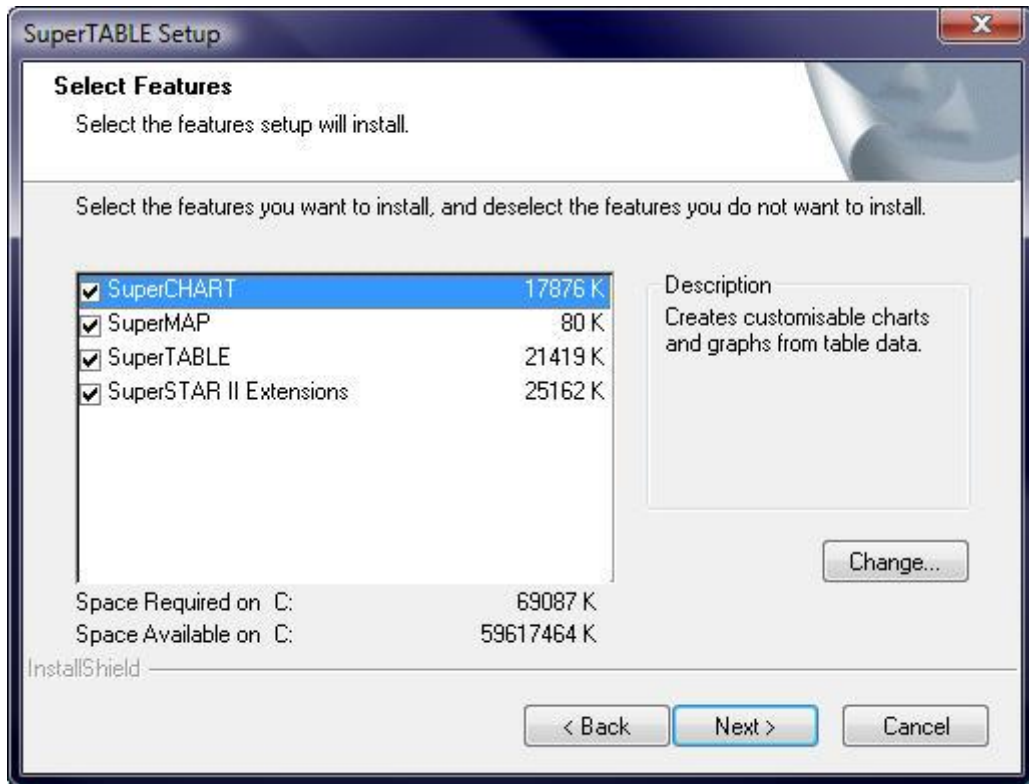
9. De-select any **languages** that you do not need installed.
10. Click the **Next >** button.
The Choose Destination Location dialog.



The default installation directory is:

C:\Program Files\STR\SuperTABLE

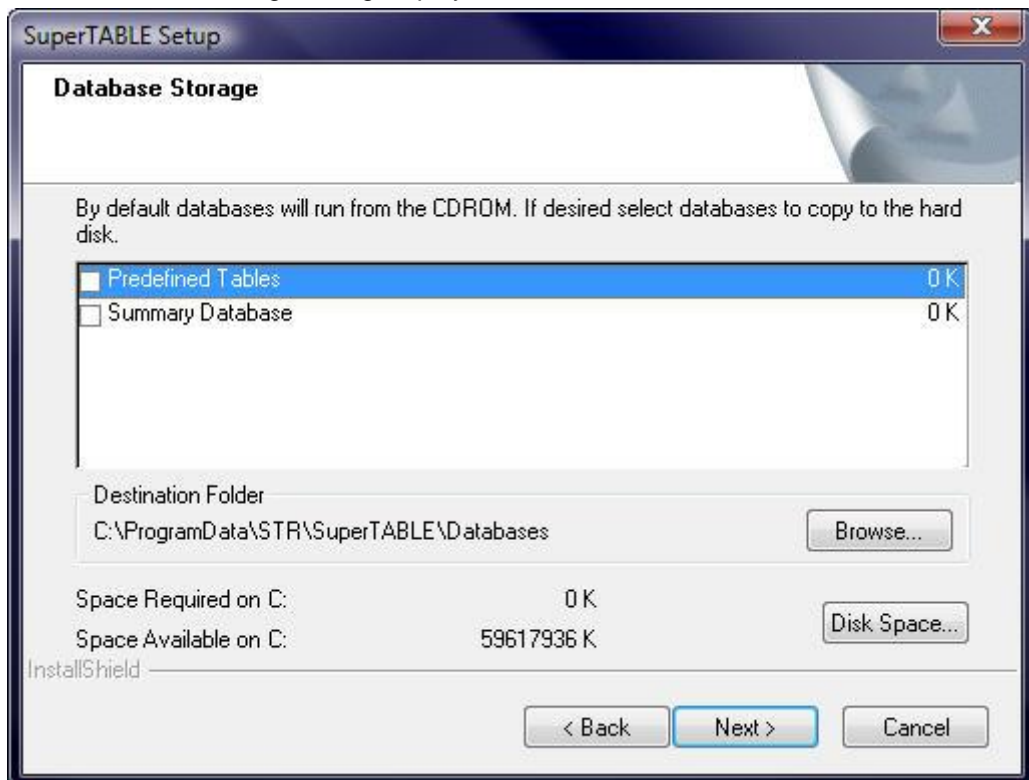
11. If required, click the **Browse...** button to select a different installation directory.
12. Click the **Next >** button.
The Select Components dialog displays.



The default displays all components to install.

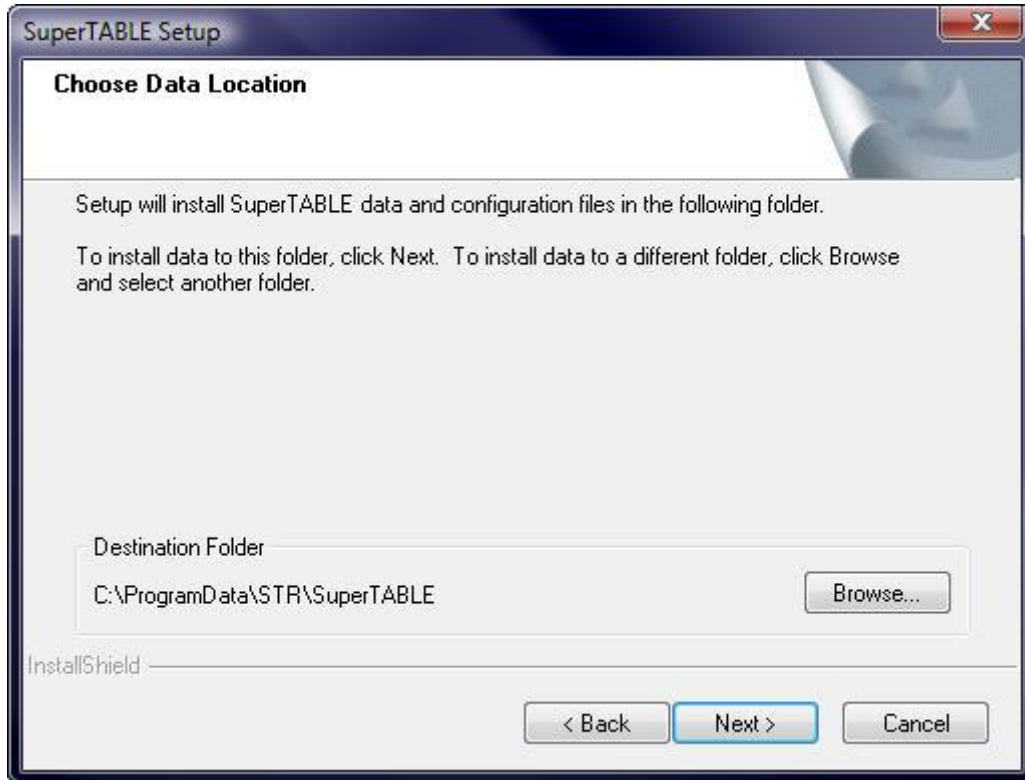
13. If required, deselect the **component(s)**.
14. Click the **Next >** button.

The Database Storage dialog displays.



15. Select the **database(s)** to install.
16. If required, select the **Browse...** button to change the database install location.
17. If required, click the **Disk Space...** button to check the available disk space.
18. Click the **Next >** button.

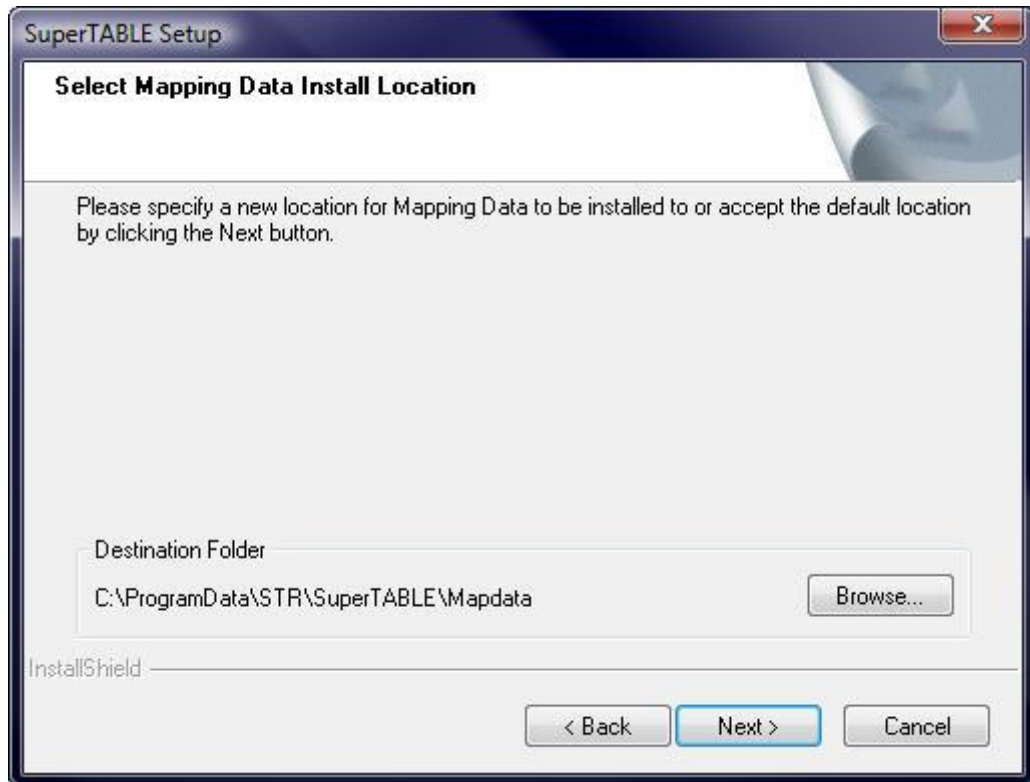
The Choose Data Location dialog displays.



Note: For Windows Server and Windows XP, the default data location is C:\Documents and Settings\All Users\Application Data\STR\SuperTABLE.

19. If required, select the **Browse...** button to change the destination folder for SuperTABLE data and configuration files.
20. Click the **Next >** button.

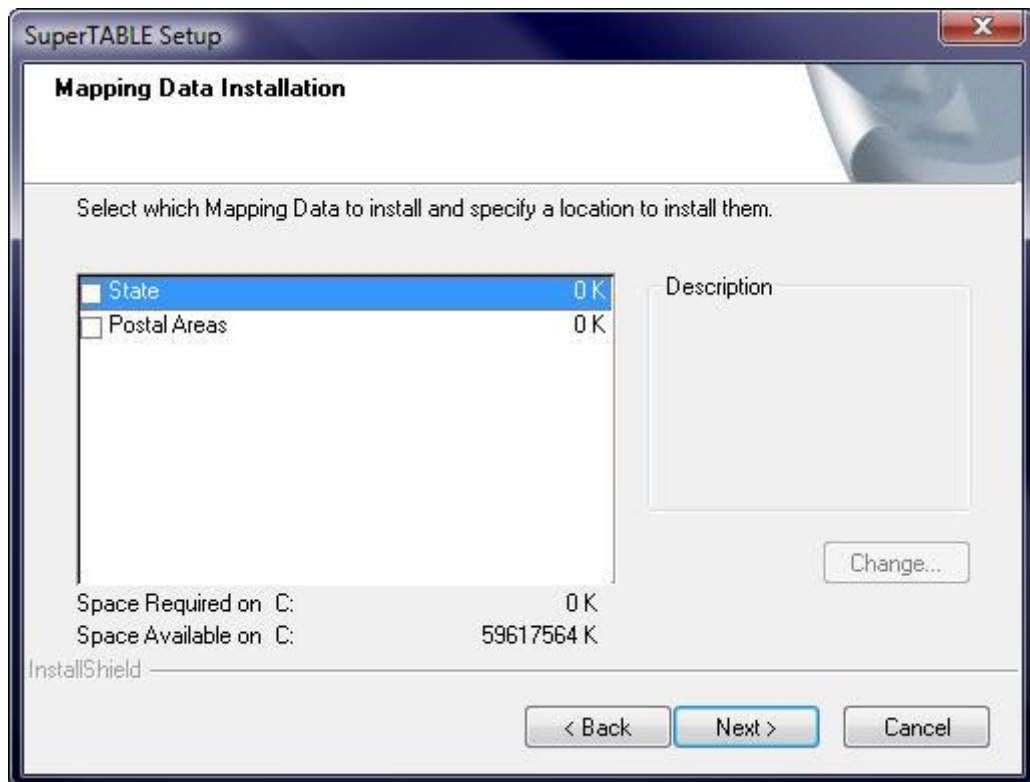
The Select Mapping Data Install Location dialog displays.



21. If required, select the **Browse...** button to change the map data install location.

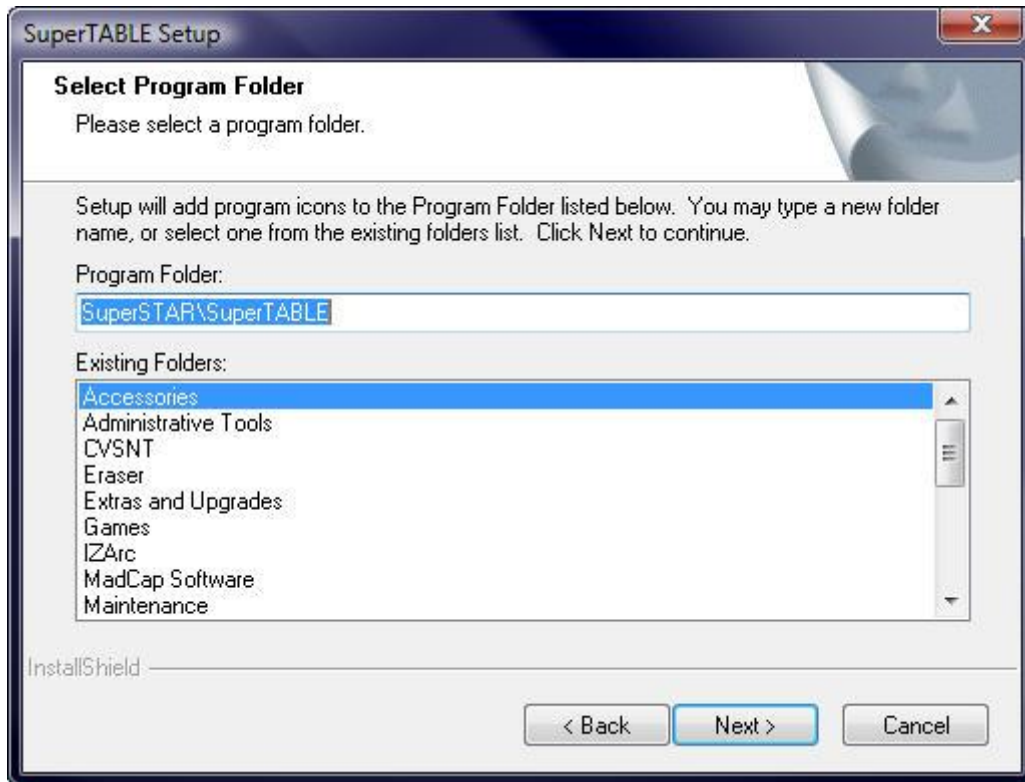
22. Click the **Next >** button.

The Mapping Data Installation dialog displays.

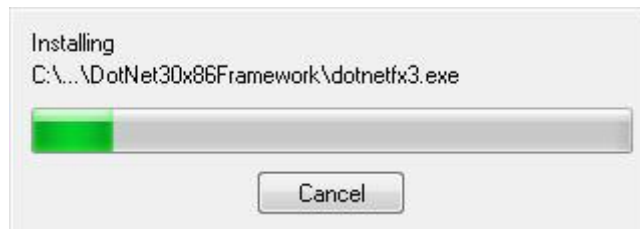


23. Select the mapping data to install.

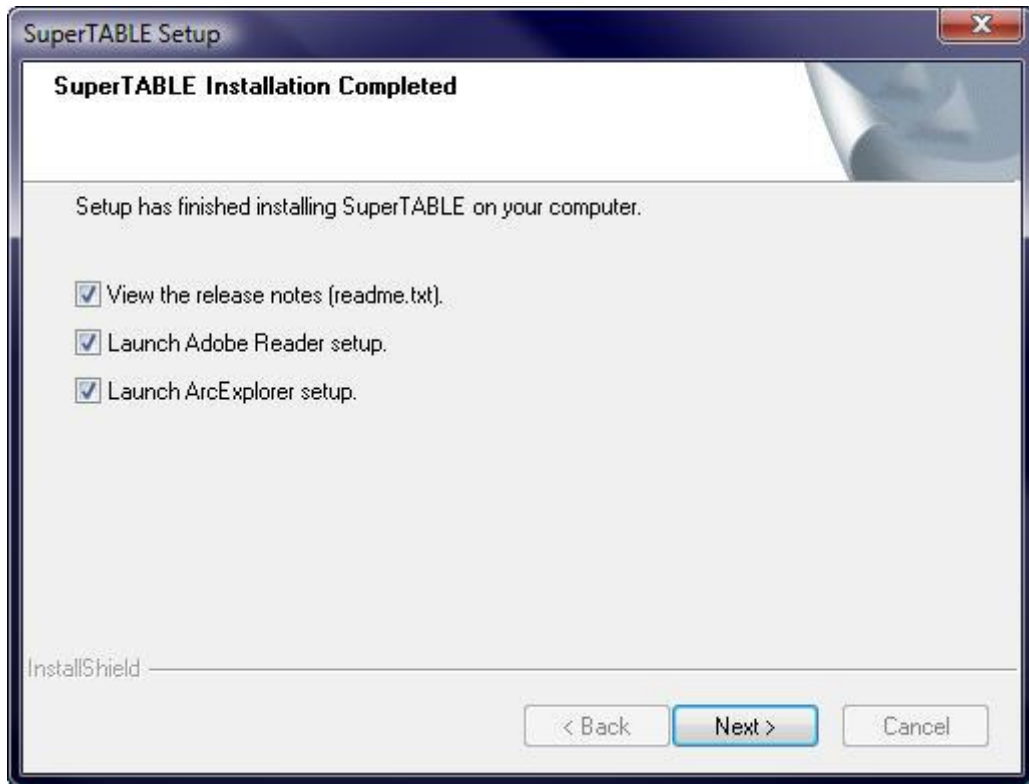
24. Click the **Next >** button.
The Select Program Folder displays.



25. If required, do one of the following:
- In the Program Folders field, type in the **folder name**.
 - In the Existing Folders list, select the **program folder**.
26. Click the **Next >** button.
The application starts installing the files.



When the installation is finished, the InstallShield Wizard Complete dialog displays.



27. Deselect **ArcExplorer** check box if you have ArcExplorer installed.
28. Deselect **Adobe Acrobat Reader** check box if you have Adobe Reader installed.
29. Click the **Next >** button.

Note: If you deselected the above options then restart your computer before starting SuperTABLE. The information message displays "Before you use SuperTABLE you must restart Windows". Click the OK button.

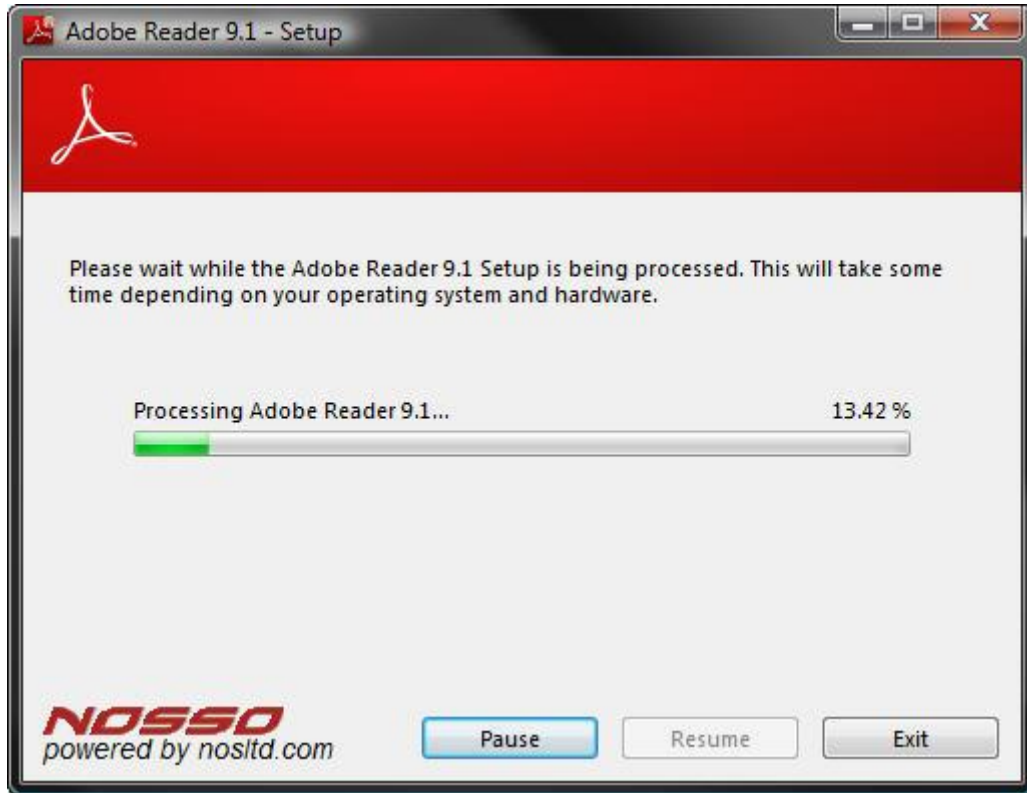
If you did not deselect the ArcExplorer and Adobe Acrobat Reader check boxes then the Adobe Acrobat Reader is installed first.

Install Adobe Acrobat

The Welcome to the Acrobat Reader Setup dialog displays.

1. Click the **Next >** button.

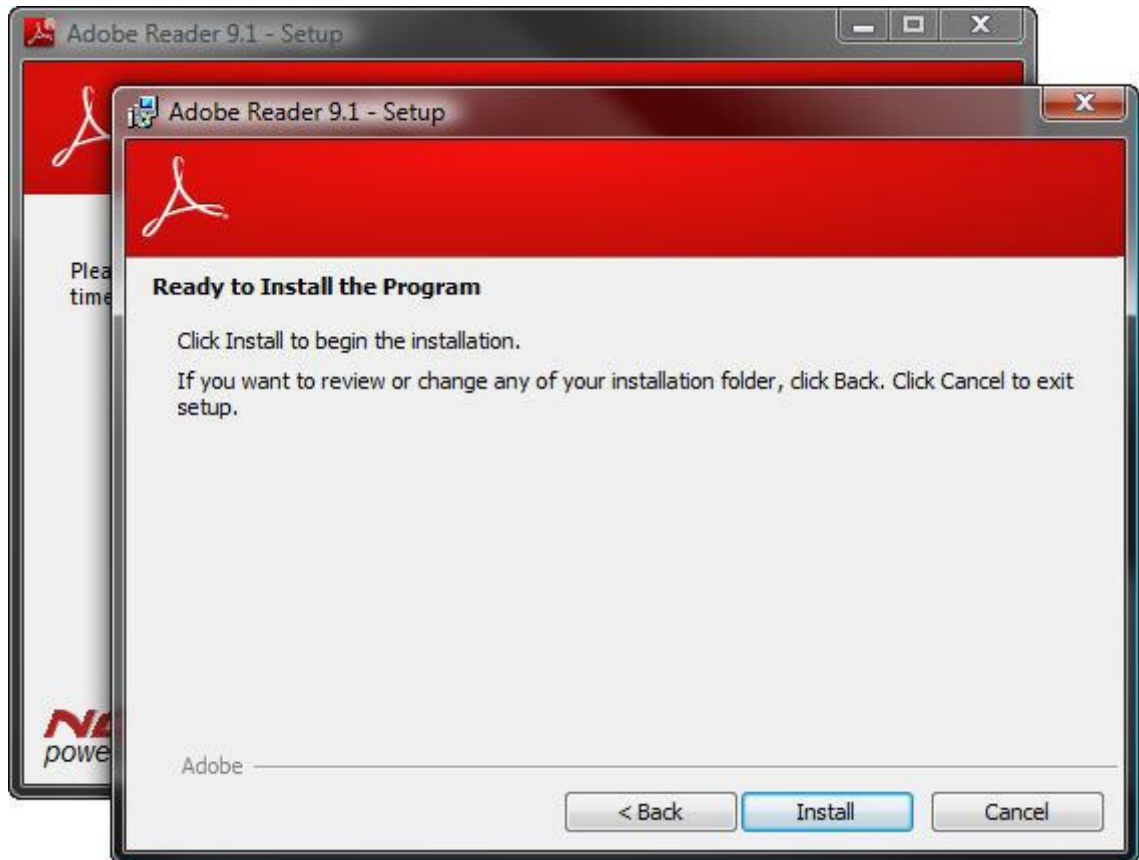
The Welcome to the Acrobat Reader Setup program dialog displays.



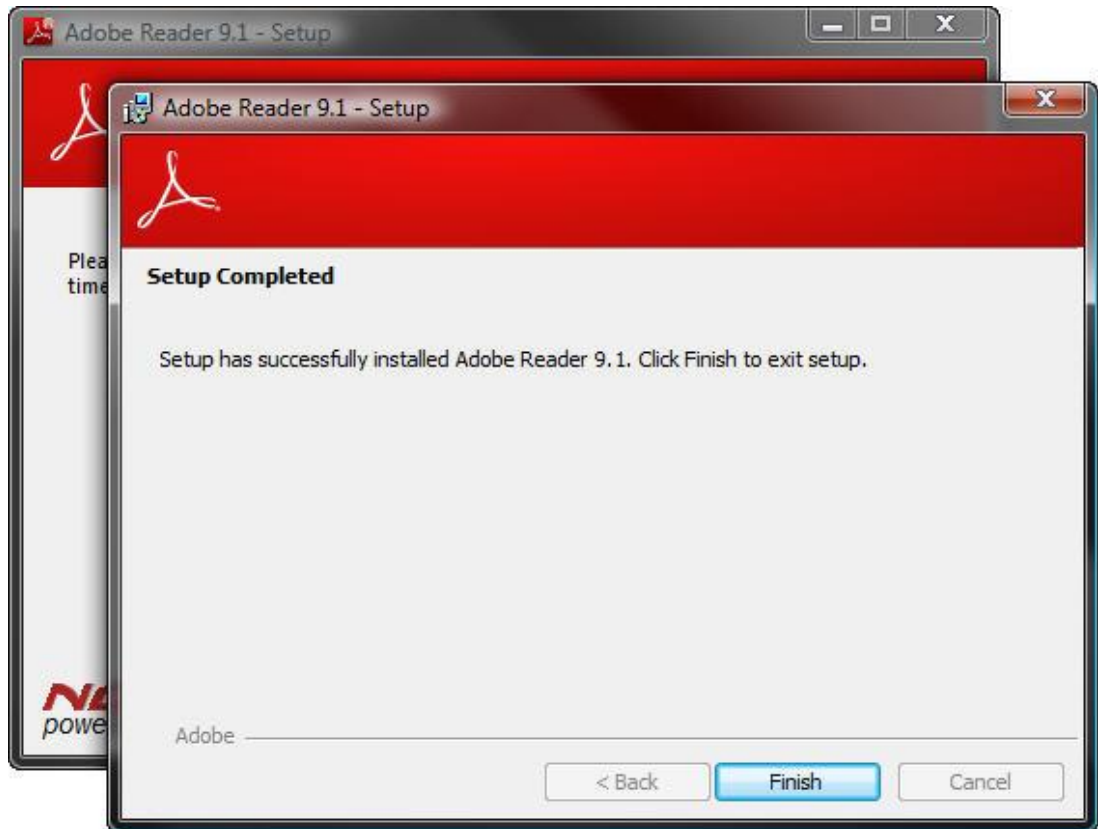
When Acrobat Reader Setup has finished processing, the Choose Destination Location dialog displays.



2. Click the **Next >** button. The Ready to Install the Program dialog displays.



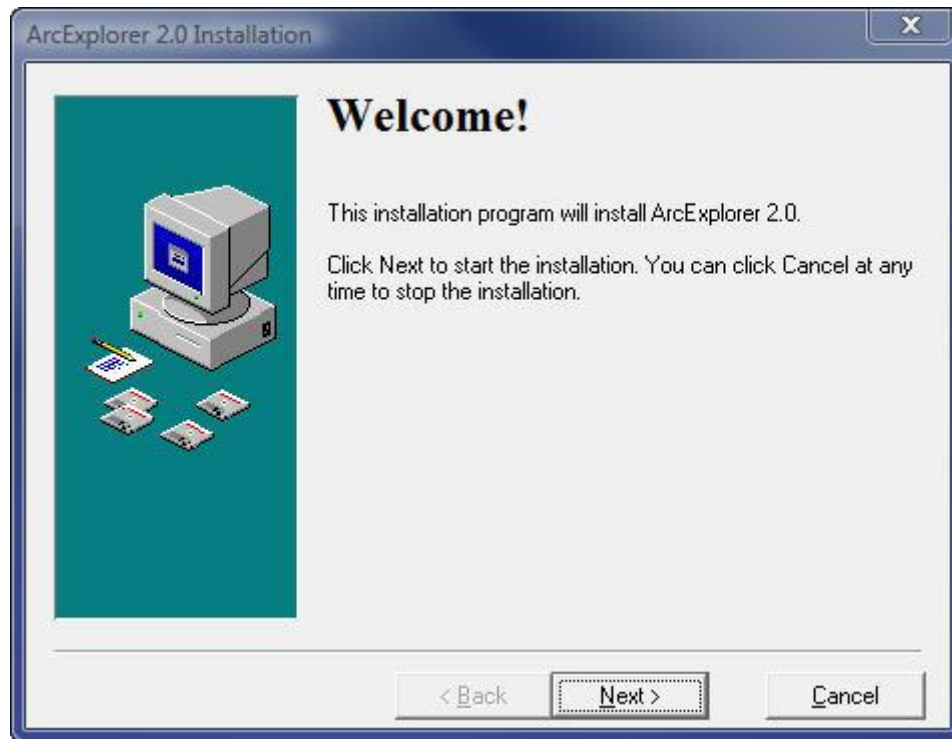
3. Click the **Install** button.
When the install is complete, the Setup Complete dialog displays.



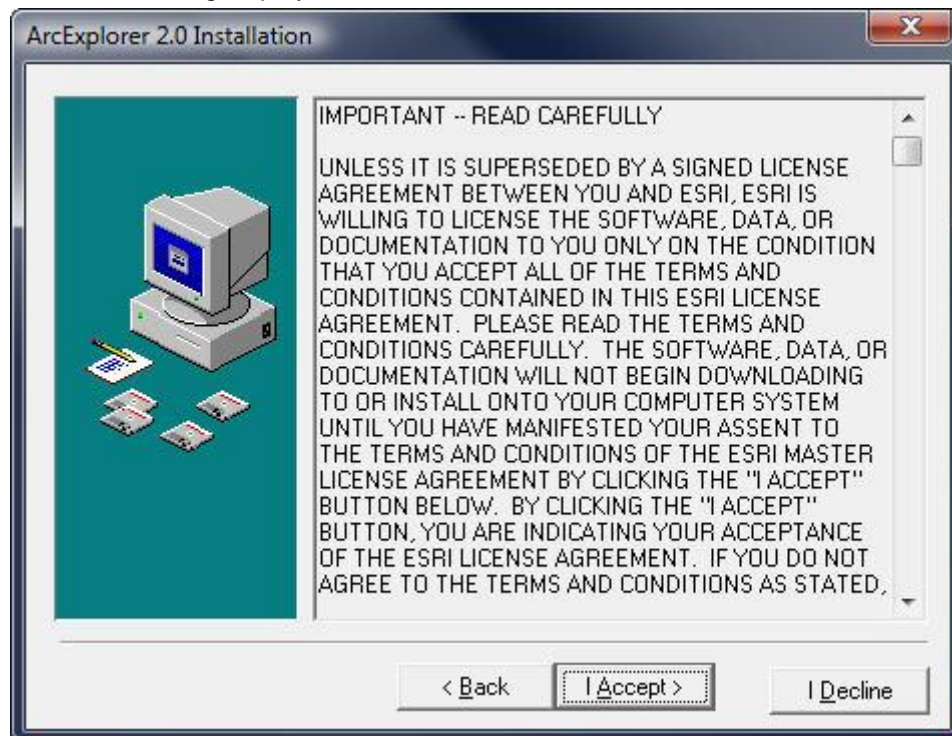
4. Click the **Finish** button.

Install ESRI ArcExplorer

Note: ESRI ArcExplorer must be run in compatibility mode on Microsoft Windows Vista.
The ArcExplorer 2.0 Installation dialog displays.

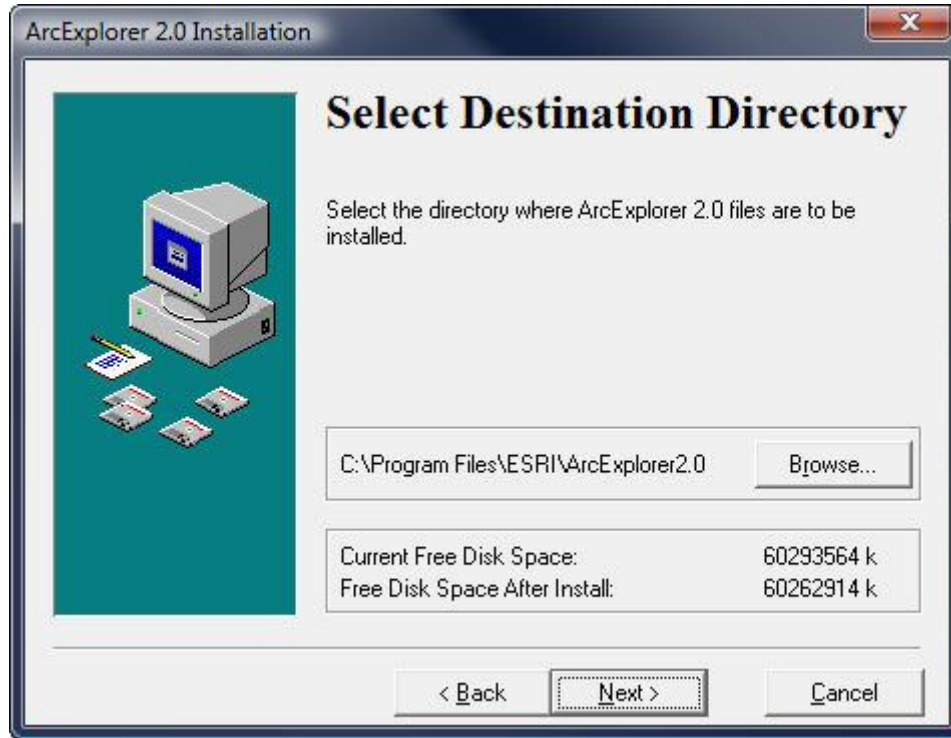


1. Click the **Next >** button.
The License dialog displays.



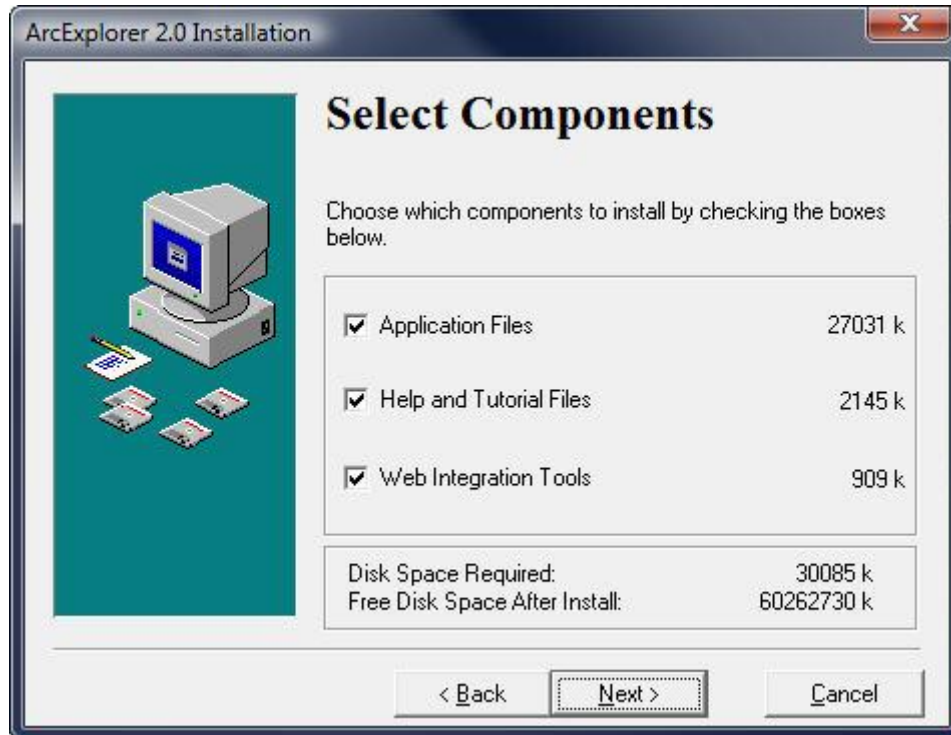
2. Click the **I Accept >** button.

The Select Destination Directory dialog displays.



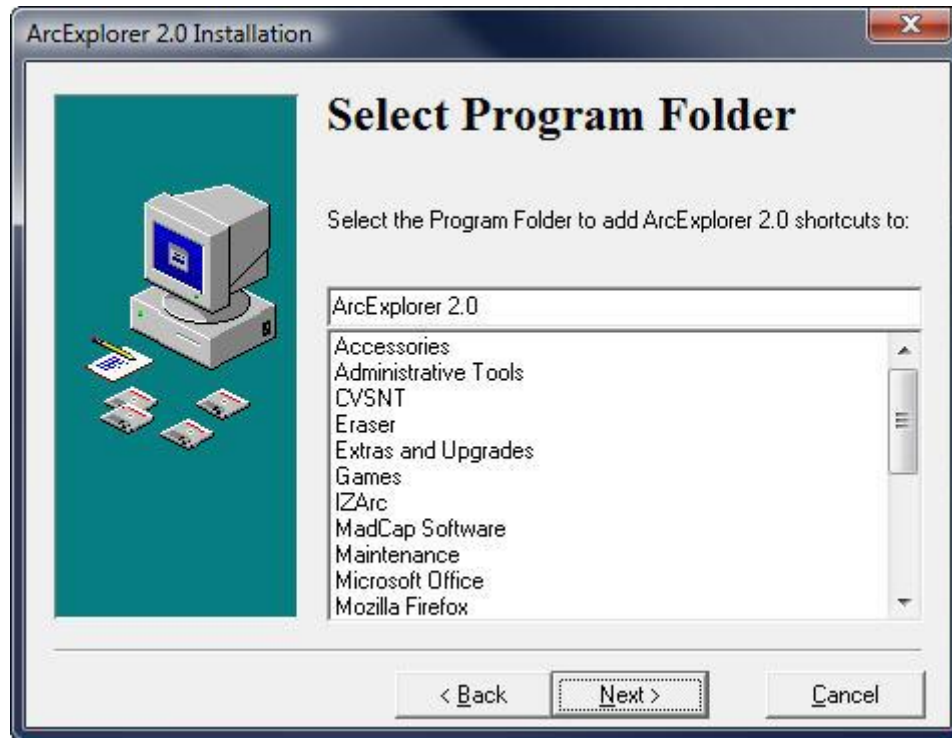
3. If require, select the **Browse....** button to change the map data install location.
4. Click the **Next >** button.

The Select Component dialog displays.

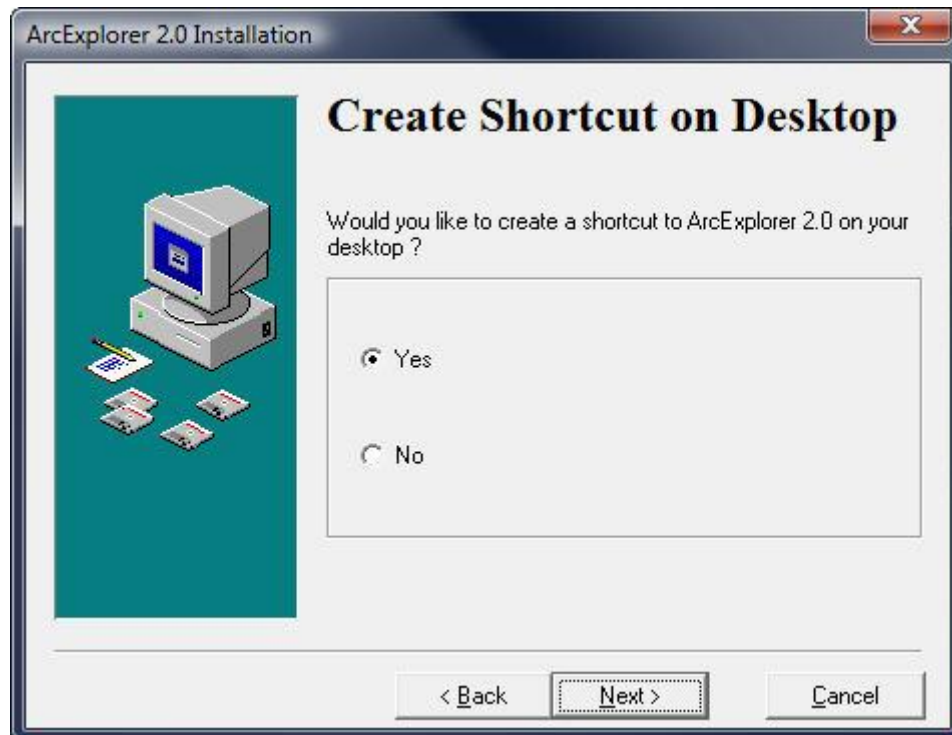


By default all check boxes are selected. Leave defaults.

- Click the **Next >** button.
The Select Program Folder displays.

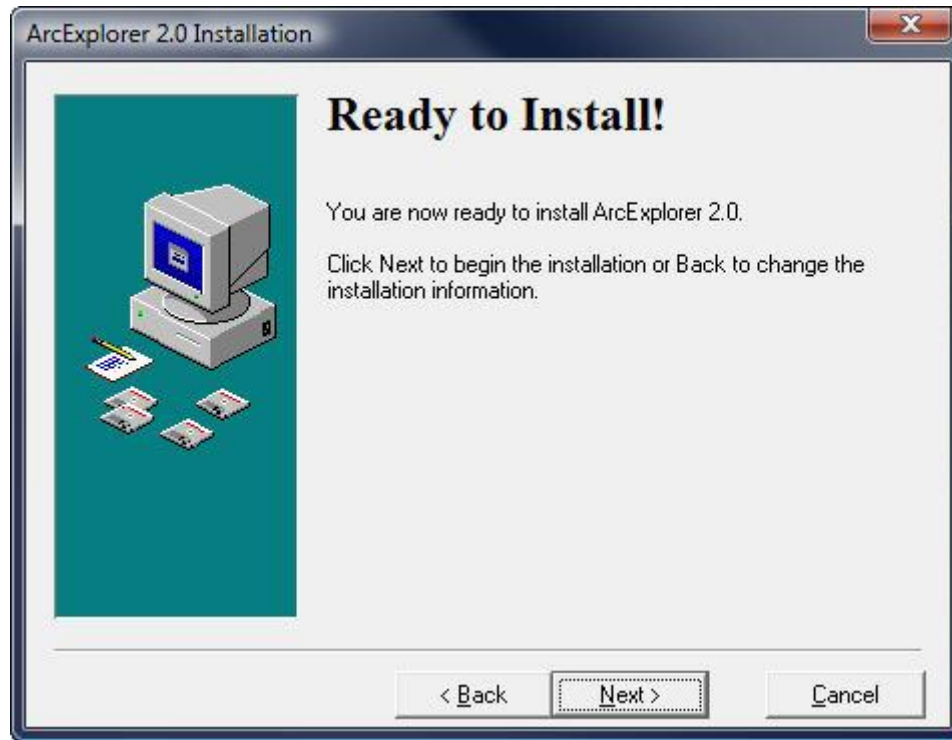


- In the Program Folders list, select the **program folder**.
- Click the **Next >** button.
The Create Shortcut on Desktop dialog displays.

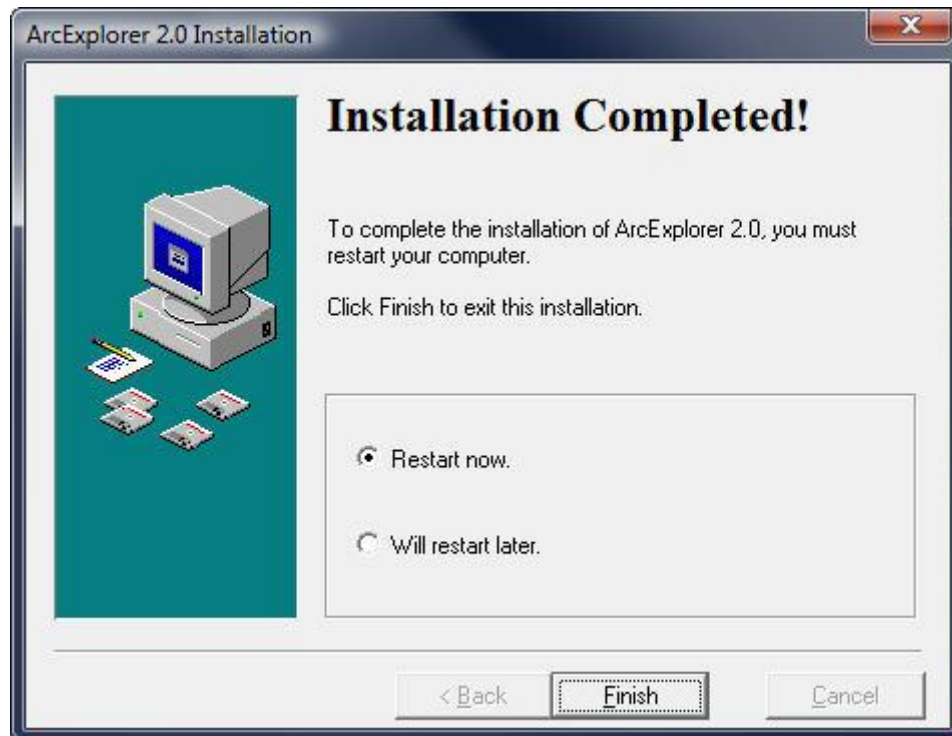


- If required, select the **No** radio button to not create a shortcut on the desktop.

9. Click the **Next >** button.
The Ready to Install! dialog displays.



10. Click the **Next >** button. The files are installed.
The installation Complete dialog displays.



Note: For Windows Server and Windows XP, the information message displays "Before you use SuperTABLE you must restart Windows".

11. Click the **Finish** button.

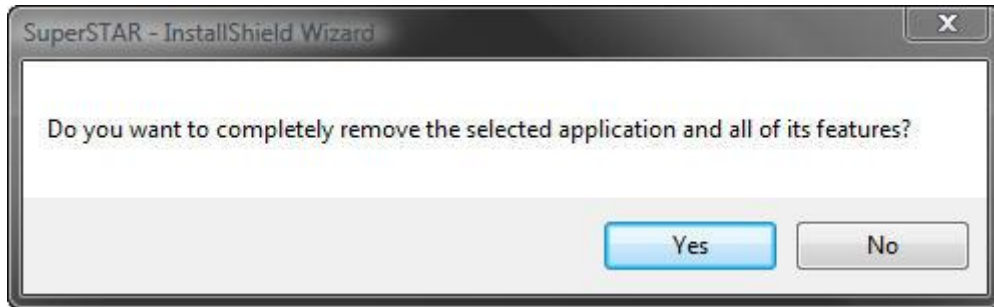
Notes:

- Windows Server and Windows XP: Click the **OK** button and restart your **computer** before starting SuperTABLE.
- Windows Vista: ESRI Arc Explorer must be run in compatibility mode.

Upgrade SuperTABLE Installation

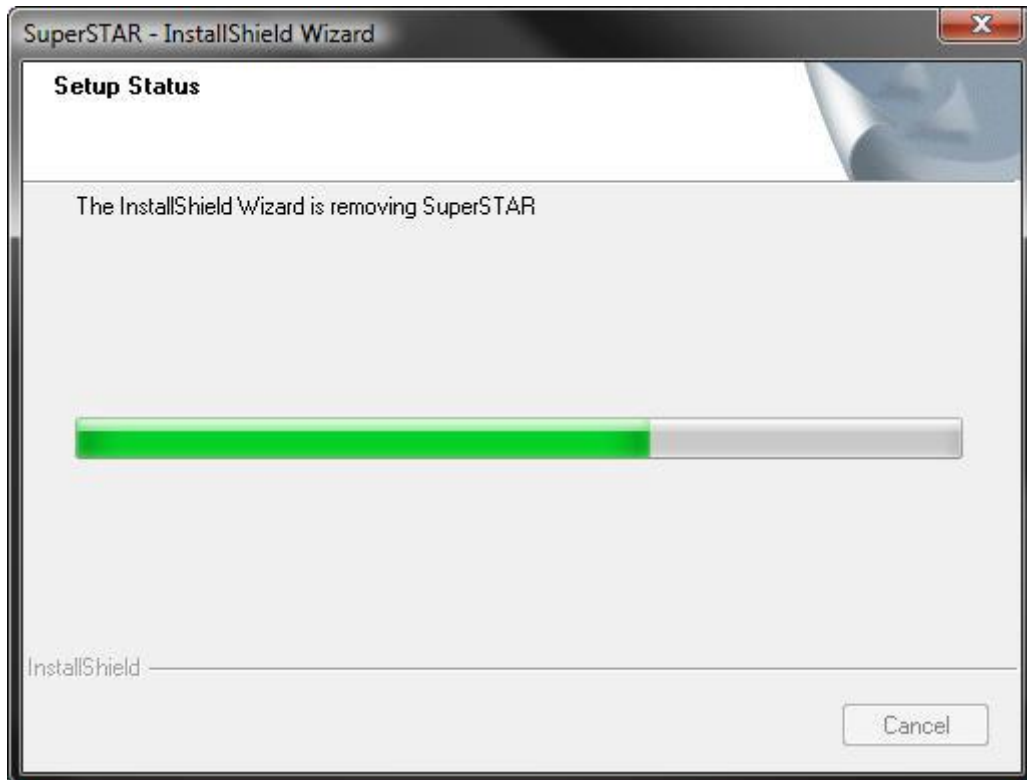
To upgrade the SuperTABLE installation you need to remove the current version and then install the new version.

1. From the Windows menu, select **start > Settings > Control Panel**.
2. Double click **Add or Remove Programs**. The Add or Programs dialog displays.
3. Scroll to find **SuperTABLE**.
4. Select **SuperTABLE**.
5. Click the **Change/Remove** button. The following warning will display.

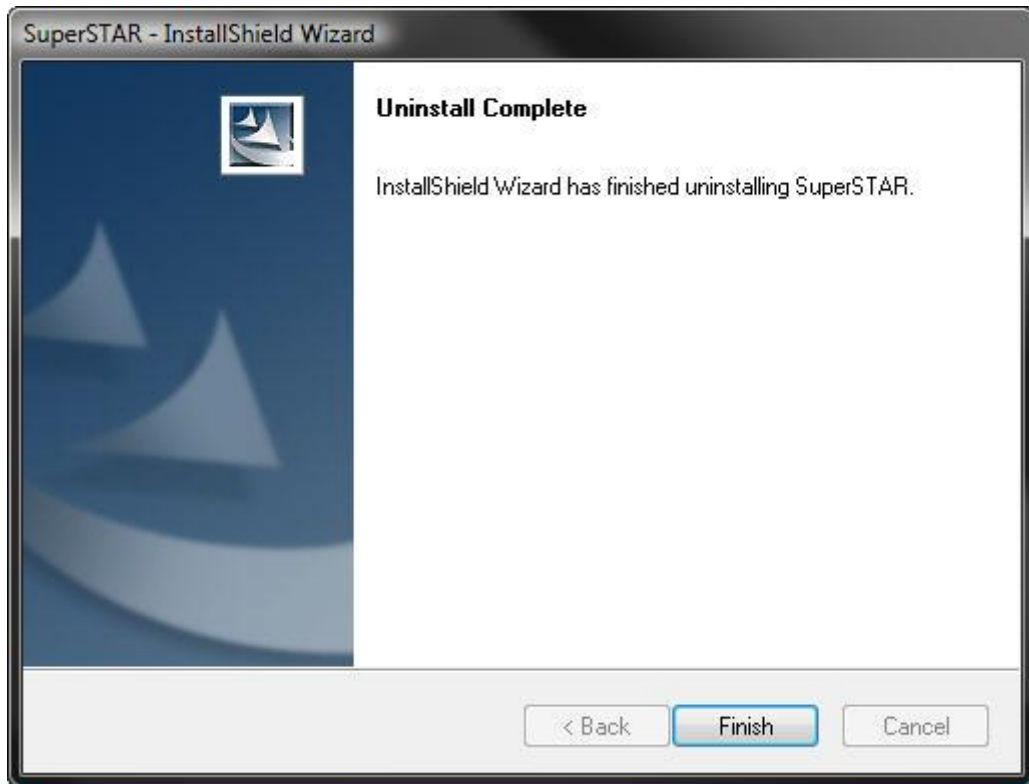


Note: For Windows Server and Windows XP, the warning message displays "This will remove SuperTABLE from your computer. Do you wish to proceed?"

1. Click the **Yes** button.
The Setup Status dialog displays.



When finished the SuperTABLE dialog displays.



2. Click the **Finish** button.
3. Install the [new SuperTABLE version](#).

Quit SuperTABLE Installation

You can cancel the installation.

- Click the **Cancel** button from any SuperTABLE installation dialog.