

For Immediate Release

Contact: Jo Deeker, jo.deeker@spacetime.com

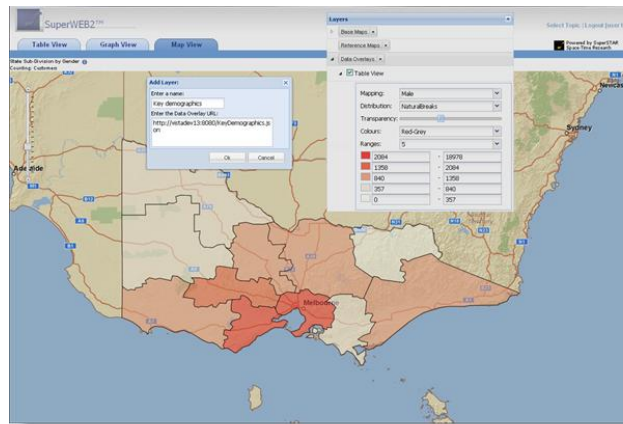


Space-Time Research's SuperSTAR 6.7 Delivers Dramatic Speed Increase Plus Customer-Driven Enhancements

Newest Version of Leading Data Analysis and Dissemination Software Speeds up Recoding Large Data Sets and Table Creation as well as Introducing User Defined Mapping Layers and Record Viewing Capability.

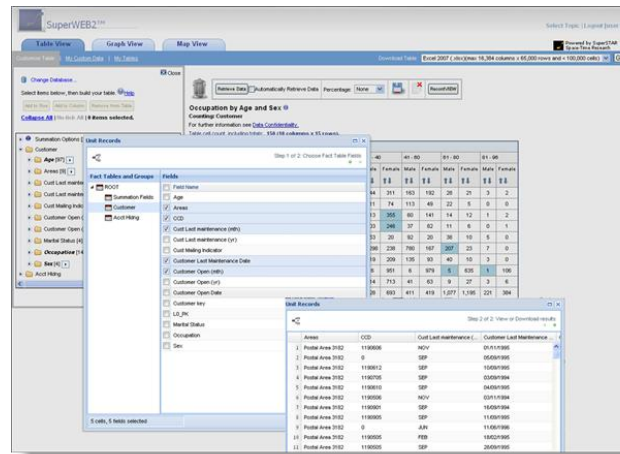
Melbourne, Australian February 26, 2010 – Space-Time Research today unveiled SuperSTAR release 6.7 with documented speed increases of a factor of 3 for table production processes, and a staggering factor of 10-100 when recoding large data sets with hundreds of thousands of classifications and up. The software is available for customer download immediately.

The release also unveils a richer Web 2.0 user experience to the interactive performance of ArcGIS Server-based Thematic Mapping Views and introduces a capability for end users to add their own data sets, sourced from user defined URLs, as overlaid map layers.



"For the US 2010 Census, IBM will be using the unique capabilities of SuperSTAR to assist with the production of more than 300 census tables for over 9 million geographies. In preparation for Census 2010 IBM conducted preliminary performance testing with a representative set of manufactured data. IBM has observed a performance improvement in processing time of over 3 times with the 6.7 release of SuperSTAR compared with earlier version of the software." - Vladimir Shebalkin, IBM DADS Project Executive.

In addition, with release 6.7, users of SuperSTAR can now easily see the detailed unit records connected to any cell in a table with one simple action.



Customers wishing to upgrade their environments should welcome that SuperSTAR now supports export to Microsoft Excel 2007 (and 2003) spreadsheet formats as well as Windows 7, Windows Server 2008 x86-64, and Solaris 10 operating systems in addition existing support for older Windows operating systems and RedHat Enterprise Linux.

"We are pleased to deliver SuperSTAR release 6.7." Don McIntosh, Space-Time's Director of Product Planning said "It is another installment of our on-going commitment to deliver practical relevant solutions to our customers."

In conjunction with the release of SuperSTAR 6.7, Space-Time Research is offering a special version of its Upgrade Service in which our consultants will do the base installation and configuration of SuperSTAR 6.7 at no charge*.

* Apply before March 31 to take advantage of our Upgrade Service Offer. See SuperSTAR 6.7 Release Announcement for details.

About Space-Time Research Pty. Ltd.

Space-Time Research software and technologies enable data transparency for government and other official statistics providers. Our analytics and visualization products provide a rich data experience for the delivery of public intelligence and Government 2.0 initiatives. Space-Time Research is the leader in web-based data dissemination combining microdata with confidentialization and field-level security for advanced privacy protection. Customers include many of the most advanced government census and statistics organizations including the US Bureau of Census and the Australian Bureau of Statistics.

For more information please contact jeff.granger@spacetimeresearch.com or visit www.spacetimeresearch.com