



SuperTABLE

Installation Guide

Version 4.5.9

Copyright

Published by:

Space-Time Research Ltd

630 Church Street

Richmond Victoria 3121

AUSTRALIA

Phone

+61 3 9425 8400

www.str.com.au

Trademarks

Product and company names mentioned herein may be the trademarks of their respective owners. All trademarks are acknowledged.

Copyright © 2007 Space-Time Research Pty Ltd. All rights reserved.

The information contained in this publication is presented for informational use only. It is subject to change without notice and should not be construed as a commitment by Space-Time Research Pty Ltd. Every effort has been made to ensure the information is accurate, however, it should not be relied on as a detailed specification of the application.

Space-Time Research Pty Ltd, its staff and agents assume no responsibility or liability for any errors, inaccuracies or omissions in this publication. In addition, Space-Time Research Pty Ltd reserves the right to issue amendments, developments and improvements at any time without notice.

Except as permitted, no part of this publication may be reproduced, stored or transmitted, in any form or by any means, electronic, mechanical, recording or otherwise, for any purpose, without the express prior written permission of Space-Time Research Pty Ltd.

Contents

INTRODUCTION	1-1
Requirements	1-1
Hardware Requirements - Windows	1-1
Operating Systems	1-1
Third Party Software	1-1
Permissions	1-2
Release Notes	1-2
WINDOWS INSTALLATION	2-1
Install SuperTABLE Installation	2-1
Install Adobe Acrobat	2-7
Install ESRI ArcExplorer	2-8
Upgrade SuperTable Installation	2-12
Quit SuperTABLE Installation	2-13

THIS PAGE HAS BEEN INTENTIONALLY LEFT BLANK

Introduction

The objective of this CD is to deliver the SuperTABLE application.

This installation covers the following environments:

- Microsoft Windows

Requirements

This section describes the STR recommended system requirements for operating SuperTABLE, however you may use additional hardware. Generally greater hard disk capacity and random access memory (RAM) gives better performance.

Hardware Requirements - Windows

- Pentium IV 1GHz processor
- 512MB RAM
- 250MB hard disk space for SuperTABLE software

Operating Systems

- Microsoft Windows 2000, and XP.

Third Party Software

- ESRI ArcExplorer software - only required for mapping.
- Acrobat Reader 4.0

Permissions

For Microsoft Windows 2000 and XP you will require at least local administration permissions to install SuperTABLE.

SuperTABLE enables user permissions for reading initialisation files, so you can run SuperTABLE without full local administration access.

However the default installation does not allow initialisation files to be updated. This means saving User Preferences and using certain functionality requires updating the initialisation files. Administrators must decide which initialisation files can be updated by users.

Release Notes

The Release Notes contain information about the SuperTABLE version, the file name is called readme.txt.

Windows Installation

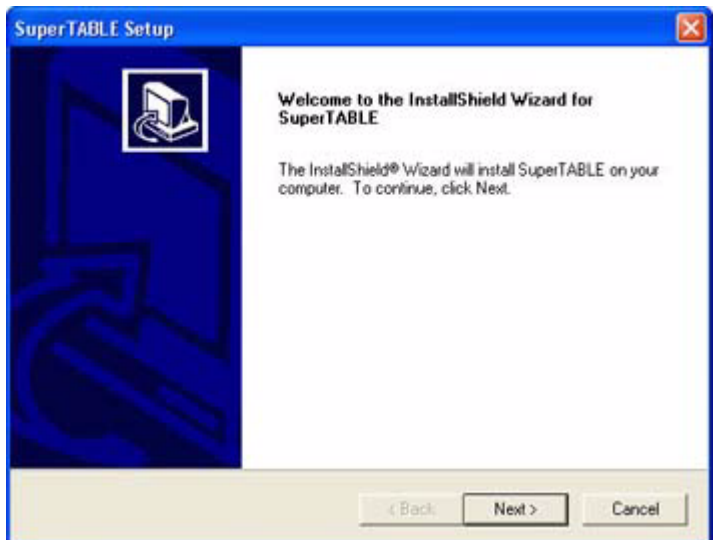
The SuperTABLE software version is installed via the SuperSTAR Setup Launcher dialog SuperTABLE option.

You can select from three types of installations - Network Master, Network User and Standard (Local).

Install SuperTABLE Installation

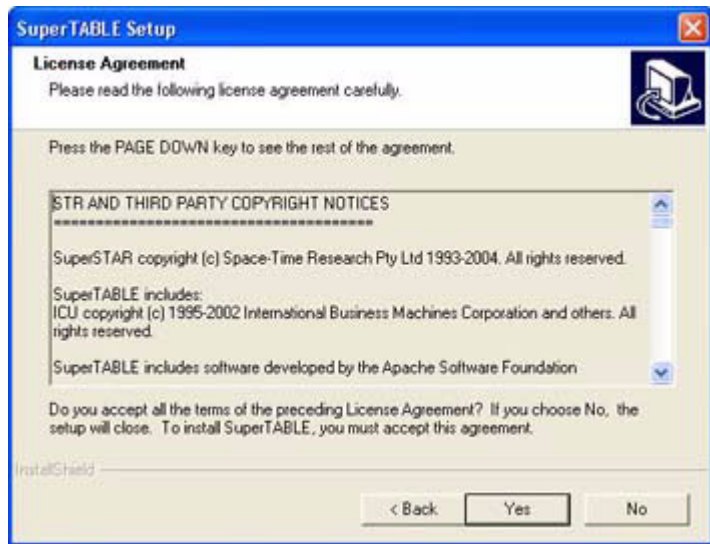
- 1 From the Microsoft Windows start menu, select **start > Run...** The Run dialog displays.
- 2 Click the **Browse...** button to locate the Setup.exe file.
- 3 Click the **OK** button.

The Welcome to the InstallShield Wizard for SuperTABLE dialog displays.



- 4 Click the **Next >** button.

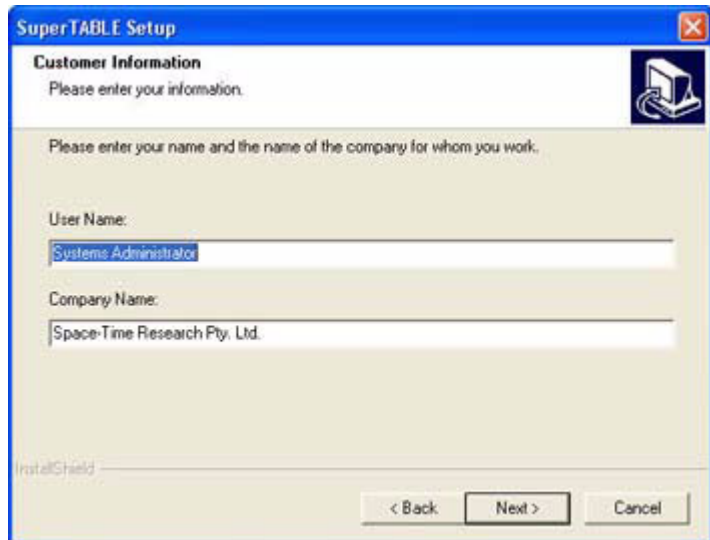
The License Agreement dialog displays.



5 Click the **Yes** button to accept the agreement.

✎ If you do not agree contact your supplier or Space-Time Research.

The Customer Information dialog displays.

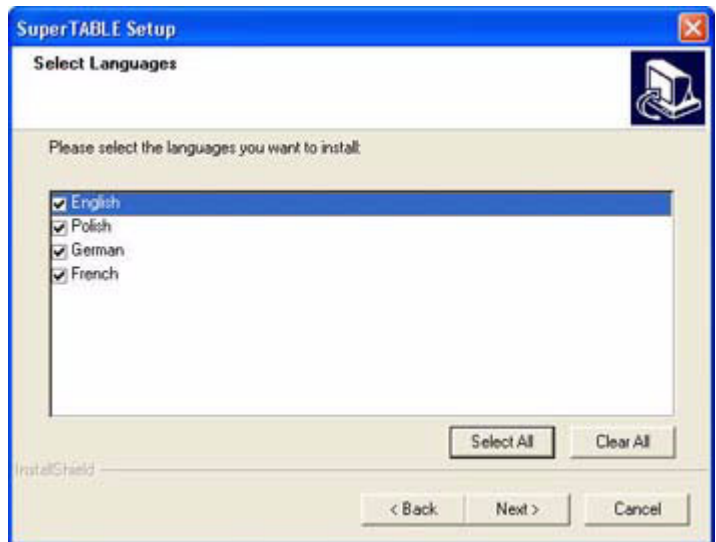


6 If required, in the User Name field, enter your **name**.

7 If required, in the Company Name field, enter the **company name**.

8 Click the **Next >** button.

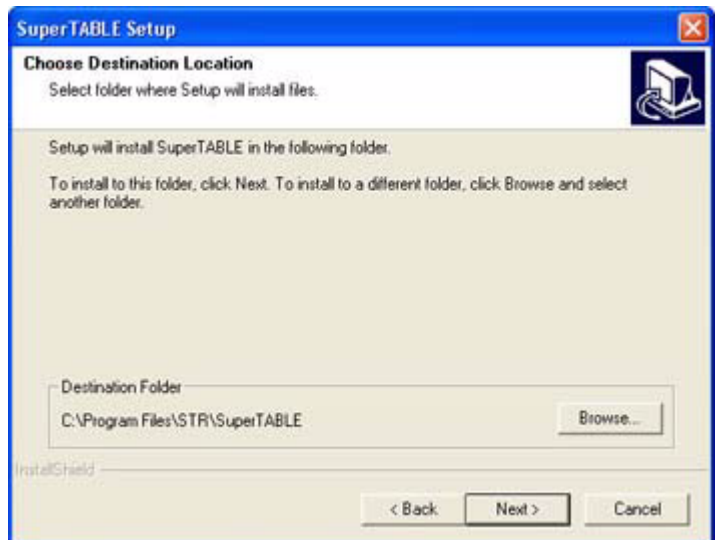
The Select Languages dialog displays.



9 Select the **languages** to install.

10 Click the **Next >** button.

The Choose Destination Location dialog.



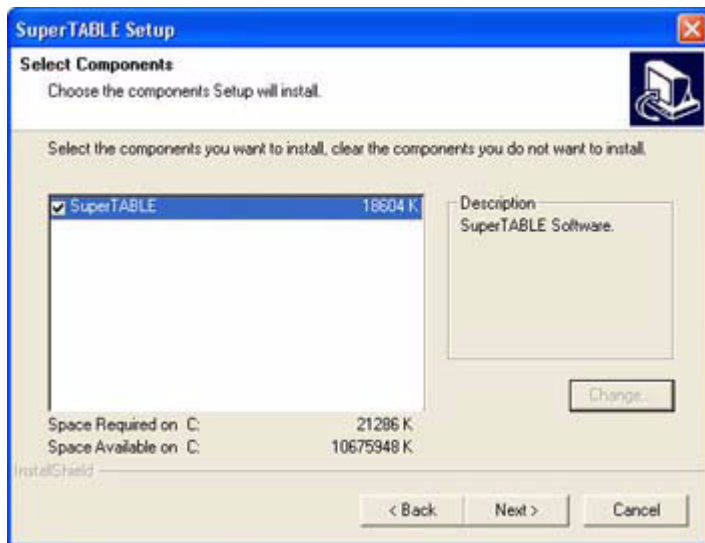
The default installation directory is:

C:\PROGRAM FILES\STR\SUPERTABLE

11 If required, click the **Browse...** button to select a different installation directory.

12 Click the **Next >** button.

The Select Components dialog displays.

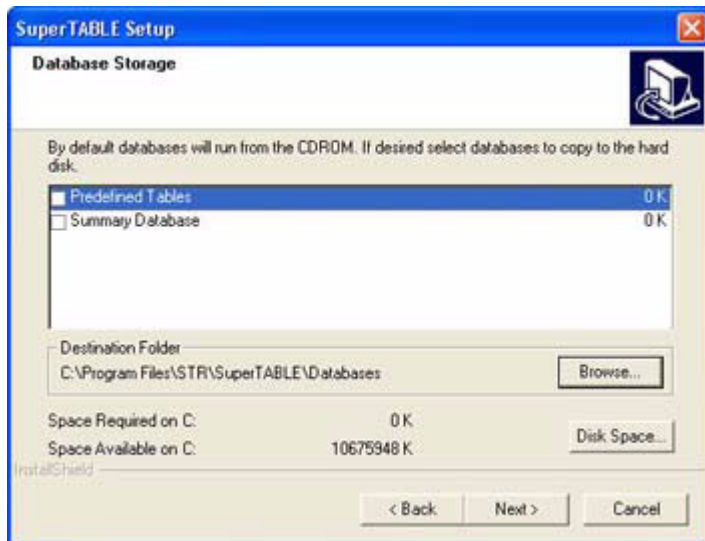


The default displays all components to install.

13 If required, deselect the **component(s)**.

14 Click the **Next >** button.

The Database Storage dialog displays.



15 Select the **database(s)** to install.

16 If required, select the **Browse...** button to change the database instal location.

17 If required, click the **Disk Space...** button to check the available disk space.

18 Click the **Next >** button.

The Select Program Folder displays.

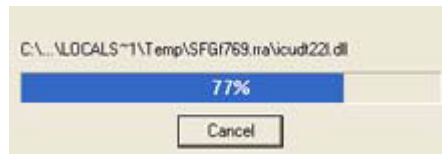


19 If required, do one of the following:

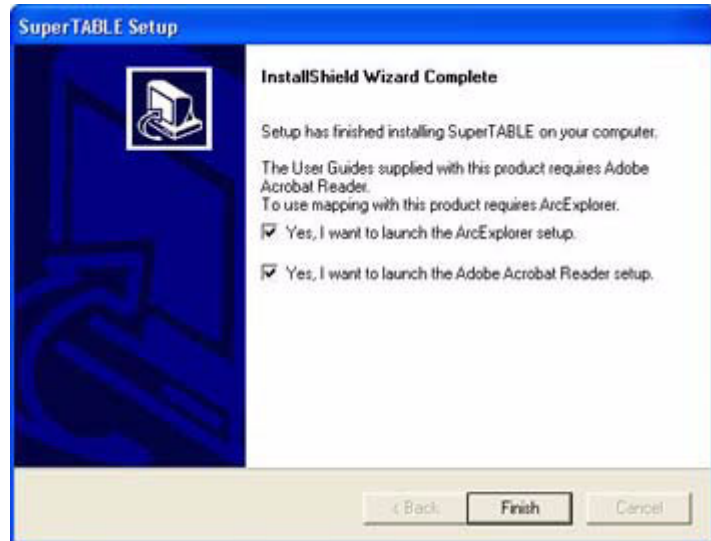
- In the Program Folders field, type in the **folder name**.
- In the Existing Folders list, select the **program folder**.

20 Click the **Next >** button.


The application starts installing the files.



When the installation is finished, the InstallShield Wizard Complete dialog displays.



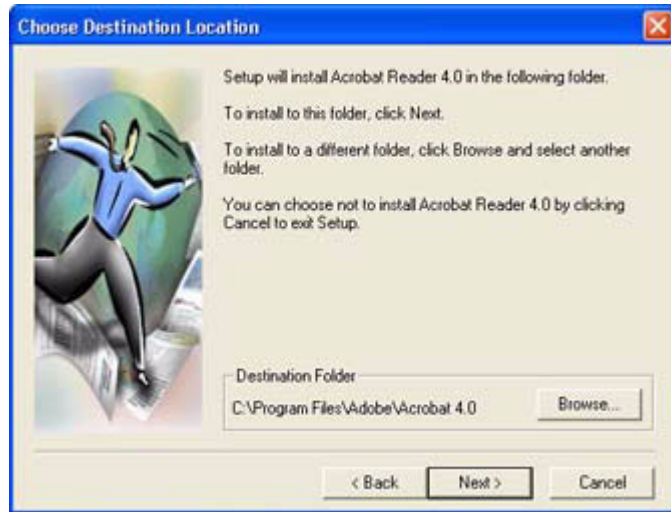
- 21** Deselect **ArcExplorer** check box if you have ArcExplorer installed.
- 22** Deselect **Adobe Acrobat Reader** check box if you have Adobe Reader installed.
- 23** Click the **Finish** button.

 *If you deselected the above options then restart your computer before starting SuperTABLE. The information message displays “Before you use SuperTABLE you must restart Windows”. Click the **OK** button.*

If you did not deselect the ArcExplorer and Adobe Acrobat Reader check boxes then the Adobe Acrobat Reader is installed first.

Install SuperTABLE Installation
Install ESRI ArcExplorer

The Choose Destination Location dialog displays.



- 4 Click the **Next >** button. The information message displays "Thank you for choosing Acrobat Reader!"
- 5 Click the OK button.

Install ESRI ArcExplorer

The ArcExplorer 2.0 Installation dialog displays.



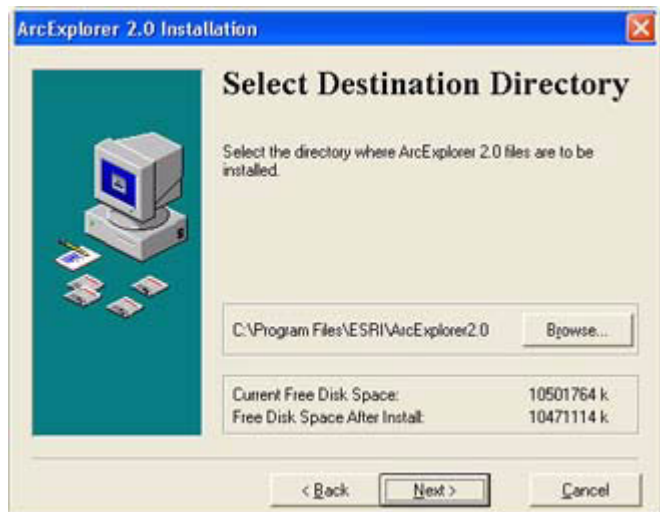
- 1 Click the **Next >** button.

The License dialog displays.



2 Click the **I Accept >** button.

The Select Destination Directory dialog displays.



3 If required, select the **Browse....** button to change the map data install location.

4 Click the **Next >** button.

The Select Component dialog displays.



5 By default all check boxes are selected. Leave defaults.

6 Click the **Next >** button.

The Select Program Folder displays.



7 In the Program Folders list, select the **program folder**.

8 Click the **Next >** button.

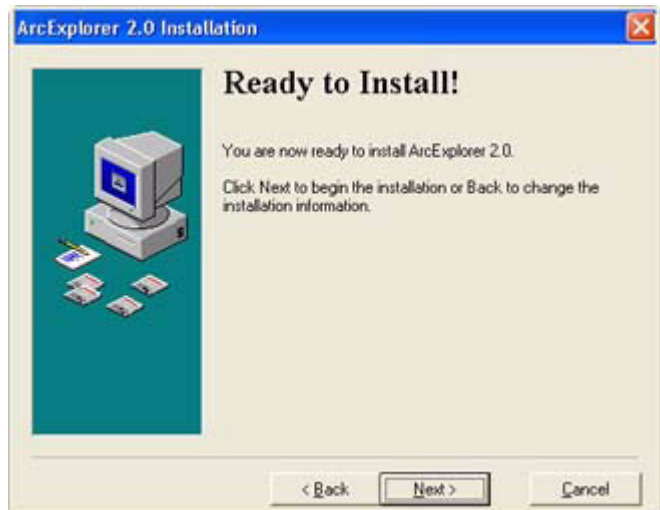
The Create Shortcut on Desktop dialog displays.



9 If required, select the No radio button to not create a shortcut on the desktop.

10 Click the **Next >** button.

The Ready to Install! dialog displays.



11 Click the **Next >** button. The files are installed. The information message displays "Before you use SuperTABLE you must restart Windows".

12 Click the **OK** button.

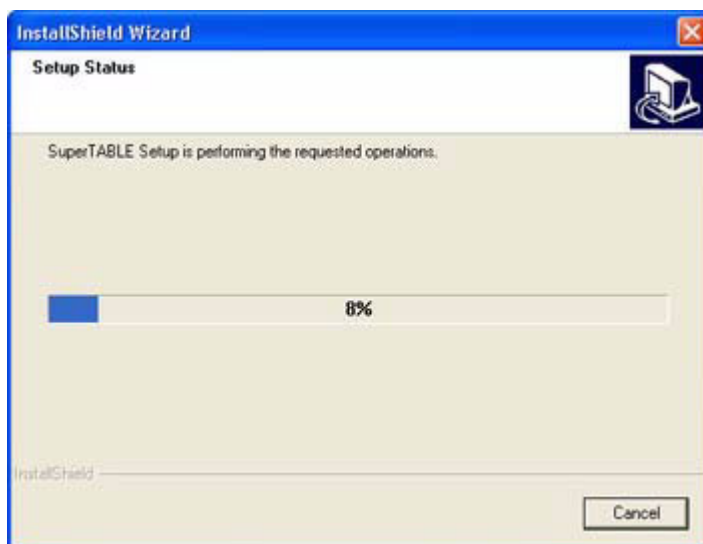
13 Restart restart your **computer** before starting SuperTABLE.

Upgrade SuperTable Installation

To upgrade the SuperTable installation you need to remove the current version and then install the new version.

- 1 From the Windows menu, select **start > Settings > Control Panel**.
- 2 Double click **Add or Remove Programs**. The Add or Programs dialog displays.
- 3 Scroll to find **SuperTABLE**.
- 4 Select **SuperTABLE**.
- 5 Click the **Change/Remove** button. The warning message displays “This will remove SuperTABLE from your computer. Do you wish to proceed?”
- 6 Click the **Yes** button.

The Setup Status dialog displays.



When finished the SuperTABLE dialog displays.



- 7 Click the **OK** button.
- 8 Install the **new SuperTABLE version**. Refer to this chapter, page 1, Install SuperTABLE Installation for more information.

Quit SuperTABLE Installation

You can cancel the installation.

- Click the **Cancel** button from any SuperTABLE installation dialog.

Quit SuperTABLE Installation
Install ESRI ArcExplorer

THIS PAGE HAS BEEN INTENTIONALLY LEFT BLANK